



GAT MONTHLY MEMBERSHIP PROGRESS REPORT

Results as of: 2/29/2024

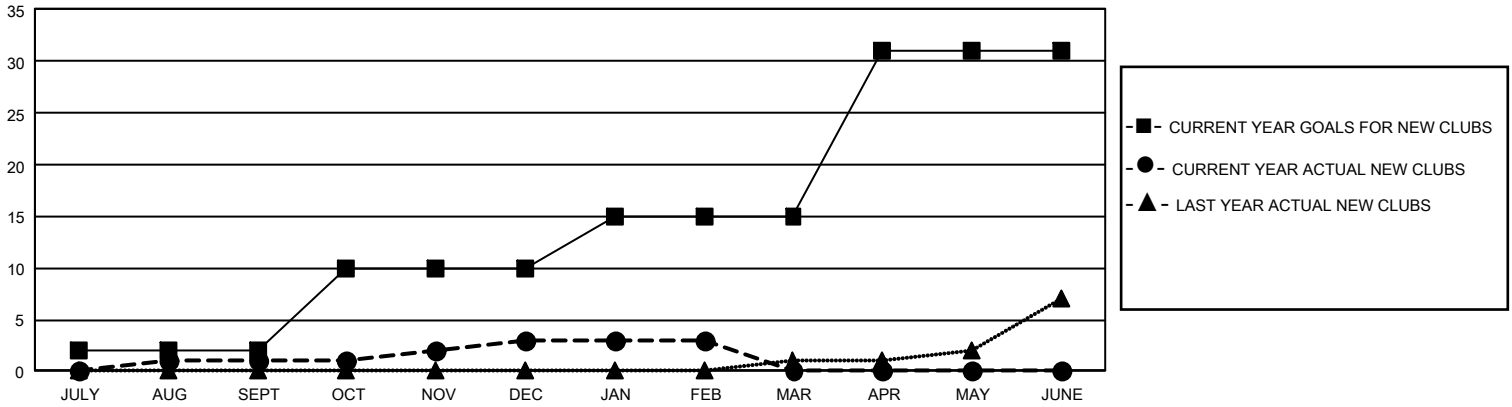
GMT Constitutional Area 1, Group C

REPORT DOES NOT INCLUDE CLUBS IN UNDISTRICTED AREAS.

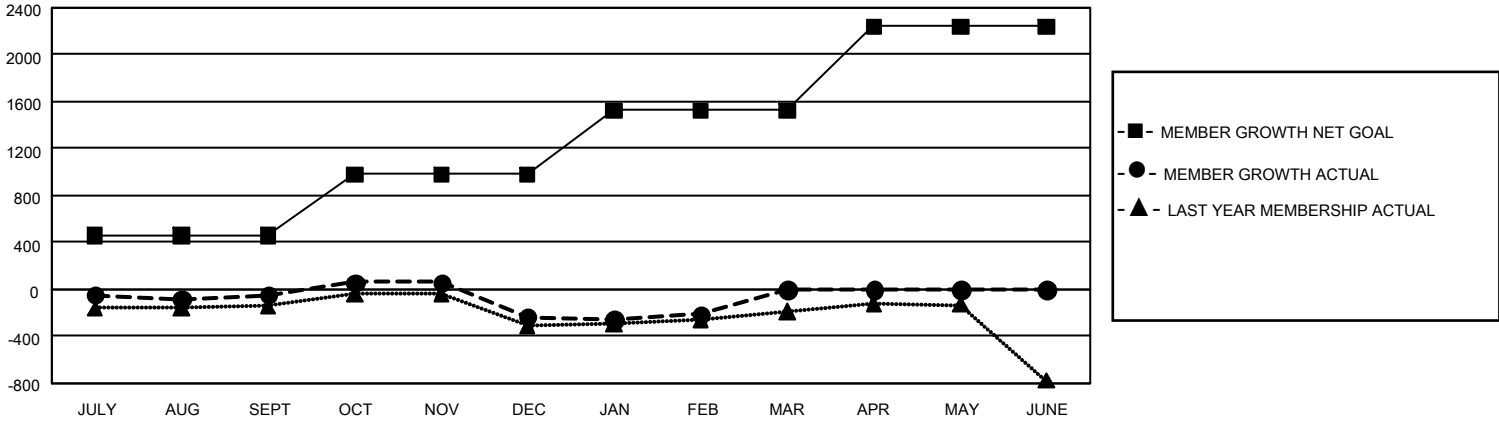
Clubs			
RESULTS FOR 2023-2024			
QUARTER	NEW CLUB GOAL	NEW CLUBS	DROPPED CLUBS
JULY/AUG/SEPT	6	1	4
OCT/NOV/DEC	24	2	3
JAN/FEB/MAR	15	0	1
APR/MAY/JUNE	48	0	0

Members			
RESULTS FOR 2023-2024			
QUARTER	MEMBER GROWTH NET GOAL	MEMBER GROWTH ACTUAL	DROPPED MEMBERS ACTUAL (including transfers)
JULY/AUG/SEPT	455	1,033	987
OCT/NOV/DEC	525	984	1,090
JAN/FEB/MAR	543	637	571
APR/MAY/JUNE	719	0	0

GOALS AND ACTUAL NEW CLUBS CUMULATIVE



GOALS AND ACTUAL MEMBERS CUMULATIVE



DROPPED CLUBS: 8	806 CLUBS OF 1,402 ADDED 1 OR MORE NEW MEMBERS	GENDER DISTRIBUTION	
		MALE 29,317 (68.77%) FEMALE 13,295 (31.19%) NON BINARY 3 (0.01%) PREFER NOT TO ANSWER 13 (0.03%)	
DROPPED MEMBERS		CLICK HERE FOR CUMULATIVE MEMBERSHIP DATA	
DECEASED 438 CLUB CANCELLED 28 OTHER 2,182 TOTAL 2,648	TOTAL FAMILY UNIT MEMBERS 8,808 FAMILY MEMBERS PAYING HALF DUES 4,469		